

SuperEar® SE10



User Manual

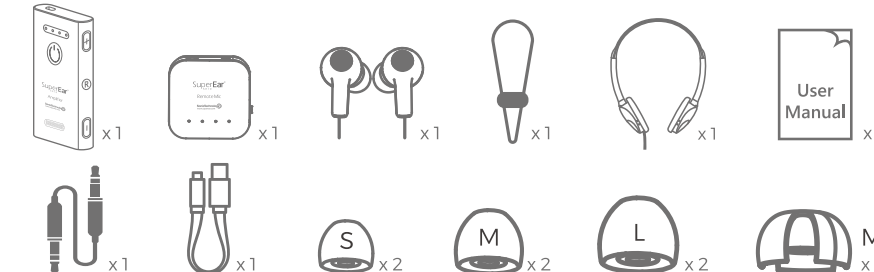


800-247-5548
www.superear.com
superear@sonictechnology.com
Sonic Technology Products
P.O. Box 539, Grass Valley, CA 95945 USA

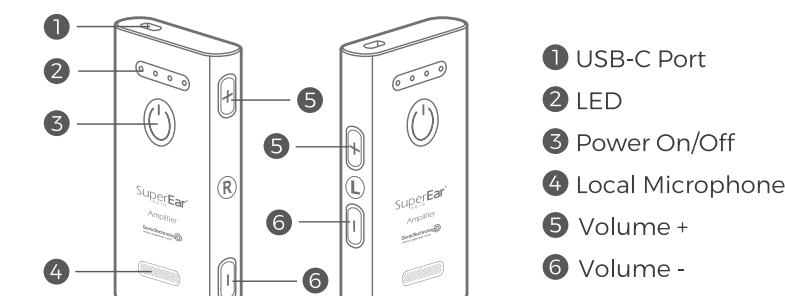


Thank you for purchasing your new SuperEar SE10 Hearing Amplifier. This user manual will provide you with all of the information you need to get started with your SuperEar SE10 Hearing Amplifier. If you have any problems setting up or using your SuperEar SE10 Hearing Amplifier, please contact us by email at: superear@sonictechnology.com or scan the QR code to log in our website: <https://www.superear.com>

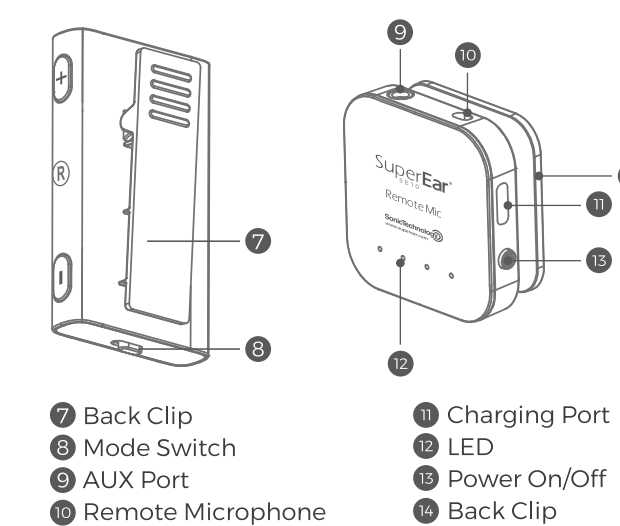
Package Contents



Product Overview



EN-01



Product Specifications

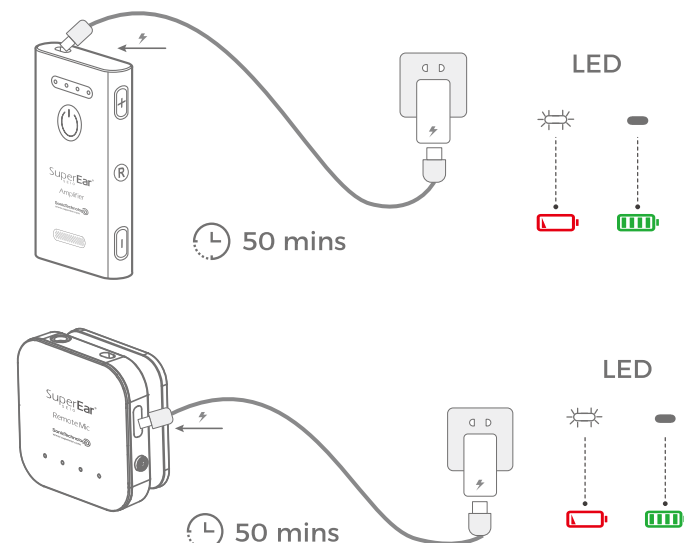
- Power input: 5V = 1A
- Charging Port: USB-C
- Frequency response range(Hz): 300-6000
- Equivalent input noise(dB): $\leq 20 \pm 3$
- Total harmonic distortion: $\leq 3\%$
- Maximum saturated sound pressure level OSPL90(dB): 120 ± 3
- High frequency average OSPL90(dB): 116 ± 3
- HFA Full of Gain(dB): 50 ± 5
- Hearing amplifier (Local Mic Mode) working time: 24hrs
- Hearing amplifier (Remote Mic Mode) working time: 15hrs
- Remote Microphone working time: 24hrs

EN-02

How to use

1. Hearing Amplifier and Remote Microphone Charging

Please charge the device with included USB-C Cable, the estimated charging time is 50 mins.
(*Power adapter not included, please use regular 5V DC adapter)
(We recommend you full charge the device before first use)

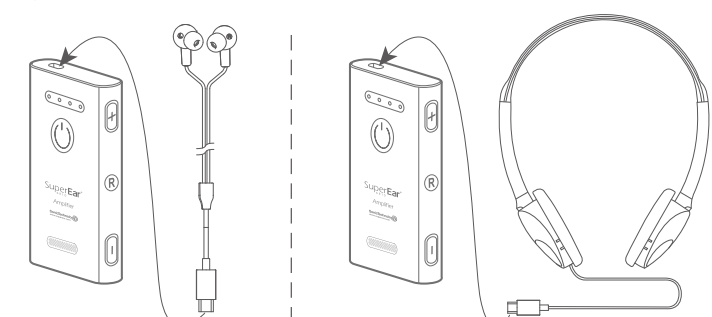


Remote Microphone can be used during charging.
It is not recommended to use this function frequently while charging, otherwise it may affect the battery life.

EN-03

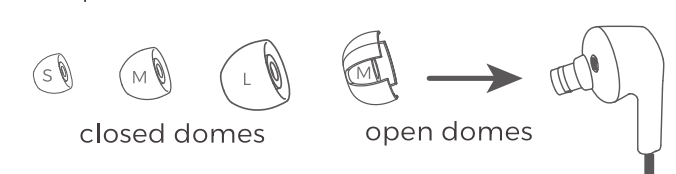
2. Connect Earphones or Headset

Please insert the included USB-C earphones or headset in the hearing amplifier.



3. Wearing

- Please choose suitable domes from S/M/L size (M size is equipped by default);
- Attach the domes to the earphones (no need if you choose M size);
- Put the earphones in the ears.



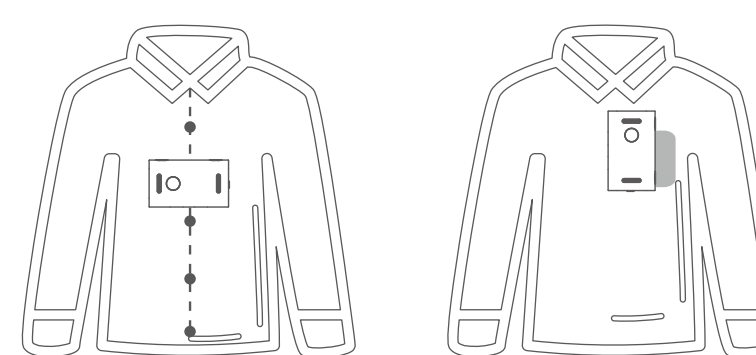
TIPS:

- * Open domes have holes in them, to prevent the ears from feeling blocked and help your voice sound more natural.
- * Closed domes do not have holes in them, to provide more bass and allow you to comfortably use a higher world volume setting.

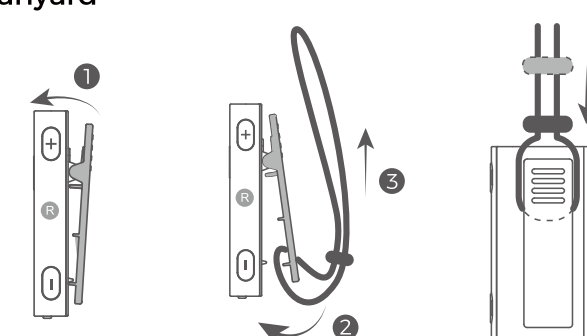
EN-04

4. You could use either clip or lanyard when wearing

Use Clip



Use A Lanyard



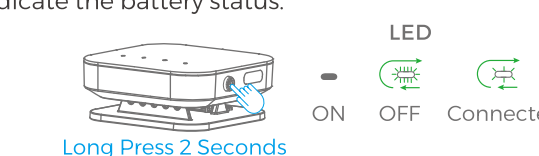
EN-05

5. Hearing Amplifier and Remote Microphone Power On/Off

Long press the hearing amplifier 'U' button for 2s to power on, Voice prompts indicate battery status.



Long press Remote Microphone power button for 2s to power on, the white LEDs indicate the battery status.



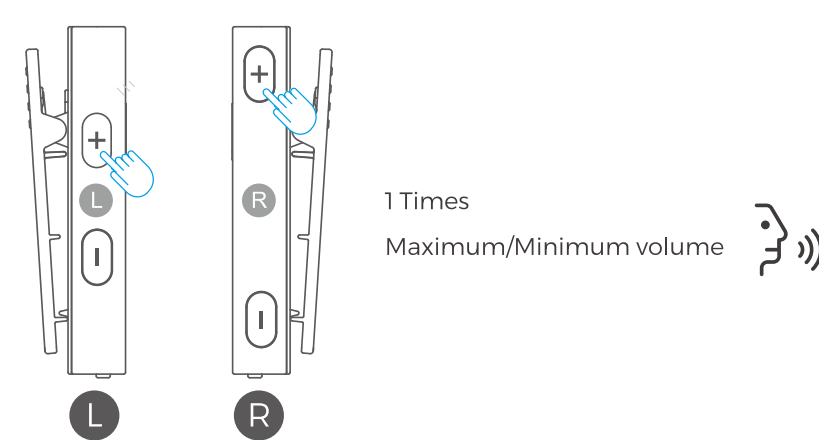
NOTE:

Please wear earphones before turning on the device.

6. Volume Adjustment

- The left and right channels can be adjusted separately, single click the +/- button to adjust the volume until you feel comfortable.
- Each time you click, there will be a 'beep' tone, and you will hear voice prompts: "maximum volume" or "minimum volume" when reached maximum/minimum volume.

EN-06



1 Times
Maximum/Minimum volume

7. Mode Switch

The hearing amplifier provides two mode settings: Local Microphone and Remote Microphone.



NOTE:

- In Local Mic mode, the hearing amplifier with Voice enhancement function to help users communicate with others nearby;
- In Remote Mic mode, the hearing amplifier needs to be used with the Remote Microphone to help users watch TV or receive distant sound.

EN-07

8. Advanced function settings

Double-click the 'U' button, the green light on the right will be always on, then enter the advanced setting mode, click the L/- button to adjust the tone level.

Each click will prompts a beep, when the maximum or minimum sound is reached, there will be two beeps. There are five tone levels adjustable.



Double click Click adjust tone

- More Treble
- More Bass

Tip: Double-click the 'U' button or do nothing for 8s to exit the setting mode.

9. Low Power Reminder

When the hearing amplifier is under low-power, the voice prompts "low power" and reminds you to charge as soon as possible.

When the Remote microphone is under low-power, the white LED on the left will flash to remind you to charge as soon as possible.

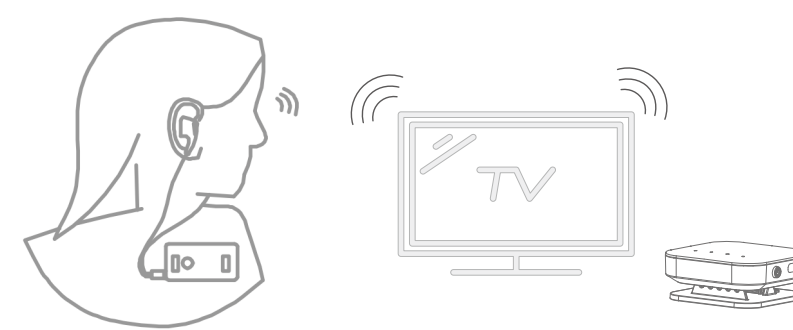
EN-08

10. Watch TV

- Turn on the hearing amplifier and Remote Microphone respectively;
- Place the Remote Microphone next to the TV, as close as possible to the sound source;
- Wear the hearing amplifier and adjust the volume to the suitable level;
- Switch the hearing amplifier mode to Remote Mic to start watching TV programs.

NOTE:

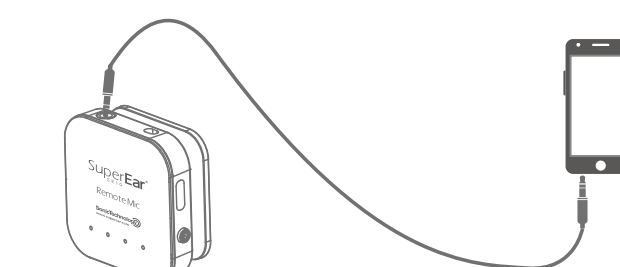
Do not block the Microphone air outlet of the Remote Microphone



11. Extended use of Remote Microphone

The Remote Microphone can also be connected to other audio players through a 3.5mm audio cable to transmit high-definition audio to the hearing amplifier, such as computers, mobile phones and other devices;

EN-09



When multiple people talk, put the Remote Microphone next to the speaker, which can transmit the long distance conversation sound to the hearing amplifier.



EN-10

FAQ

Q: How long does it take to fully charge the hearing amplifier?

A: It will be fully charge in 50mins.

Q: Could it be used with other Type-C earbuds or earphones?

A: No, you need to use included earphones and type-C cable.

Q: Hearing amplification is not good.

A: Please adjust the volume by clicking +/- button to your suitable the volume.

Q: I could hear my own voice loudly.

A: You could use hearing amplifier with Remote Microphone.

Q: I couldn't hear other people talking in a noisy environment.

A: You can set the hearing amplifier switch to Remote Mic mode, and hold the Remote Microphone close to the speaker.

Q: No sound from the receiver.

A: Please check if the Microphone is blocked, or the USB-C port is blocked, and make sure the hearing amplifier is powered on.

Q: Cannot connect the hearing amplifier with Remote Microphone.

- Make sure your hearing amplifier and Remote Microphone are both powered on.
- Hearing amplifier switch to Remote Mic mode.
- Hearing amplifier and Remote Microphone are within 15m.
- If still have any problems please feel free to contact us via: superear@sonictechnology.com

Q: Volume of TV is still not loud enough via the hearing amplifier is at maximum volume.

A: Turn up the TV volume using the TV Remote Control.

EN-11

Q: Disconnected when moving Remote Microphone.

A: The connection distance is within 20 meters for stable connection and can support up to 30meters in open field. Please place the Hearing Amplifier and Remote Microphone closer together when out of range.

FCC STATEMENT

This device complies with Part 15 of the FCC Rules. Operation is subject to the following two conditions:
(1) This device may not cause harmful interference.
(2) This device must accept any interference received, including interference that may cause undesired operation.
Warning: Changes or modifications not expressly approved by the party responsible for compliance could void the user's authority to operate the equipment.

NOTE: This equipment has been tested and found to comply with the limits for a Class B digital device, pursuant to Part 15 of the FCC Rules. These limits are designed to provide reasonable protection against harmful interference in a residential installation. This equipment generates uses and can radiate radio frequency energy and if not installed and used in accordance with the instructions, may cause harmful interference to radio communications. However, there is no guarantee that interference will not occur in a particular installation. If this equipment does cause harmful interference to radio or television reception, which can be determined by turning the equipment off and on, the user is encouraged to try to correct the interference by one or more of the following measures:

- Increase the separation between the equipment and receiver.
- Connect the equipment into an outlet on a circuit different from that to which the receiver is connected.
- Consult the dealer or an experienced radio/TV technician for help.

Remote Microphone RF Exposure Warning Statements:
This equipment complies with FCC radiation exposure limits set forth for an uncontrolled environment. This equipment shall be installed and operated with minimum distance 20cm between the radiator & body.

EN-12

Safety Instructions

- Avoid dropping.
- Do not disassemble.
- Do not submerge in water.
- Avoid extreme temperature.
- Do not use the device outdoors during thunder storm.
- Use original or certified USB cables.
- Do not use any corrosive cleaner/oil to clean.
- Avoid using excessive volume for long time.
- Avoid thermal radiation, take off when near NMR, MRI, CT scanner, or other medical machines.
- Dispose old appliances according to local regulations.

Correct Disposal of This Product

(Waste Electrical & Electronic Equipment)
This Marking shown on the product or its literature, indicate that it should not be disposed with other household wastes at the end of its working life. To prevent possible harm to the environment or human health from uncontrolled waste disposal, please separate this from other types of wastes and recycle it responsibly to promote the sustainable reuse of material resources. Household user should contact either the retailer where they purchased this product, or their local government office, for details of where and how they can take this item for environmentally safe recycling. Business users should contact their supplier and check the terms and conditions of the purchase contract. This product should not be mixed with other commercial wastes for disposal.

Legal Disclaimer

Statements regarding dietary supplements have not been evaluated by the FDA and are not intended to diagnose, treat, cure, or prevent any disease or health condition.

EN-13

3 Year Warranty

Sonic Technology Products, Inc. warrants to the original purchaser that your SuperEar® will be free of defects in material or workmanship for a period of 3 years from the date of purchase. Warranty is void if defects are caused by negligence, abuse, misuse or damage caused by water or heat.

This warranty gives you specific legal rights and you may have other rights which may vary from state to state.

Please call us first to determine if it will be necessary to send your SuperEar® in for service under the terms of this warranty. If yes, it must be returned in a well-packaged carton and shipped postage prepaid.

EN-14